

Rapid Dryer Installation and Operation Manual



Model : RD-405P3



세일리코주식회사
SEILIECO CORP.

경기도 군포시 당정동 323-1 군포제일공단 504호

TEL:82-429-6462, FAX:82-31-429-6466

URL : <http://seilieco.com>

JEIL APT FACTORY ROOM 504, 323-1

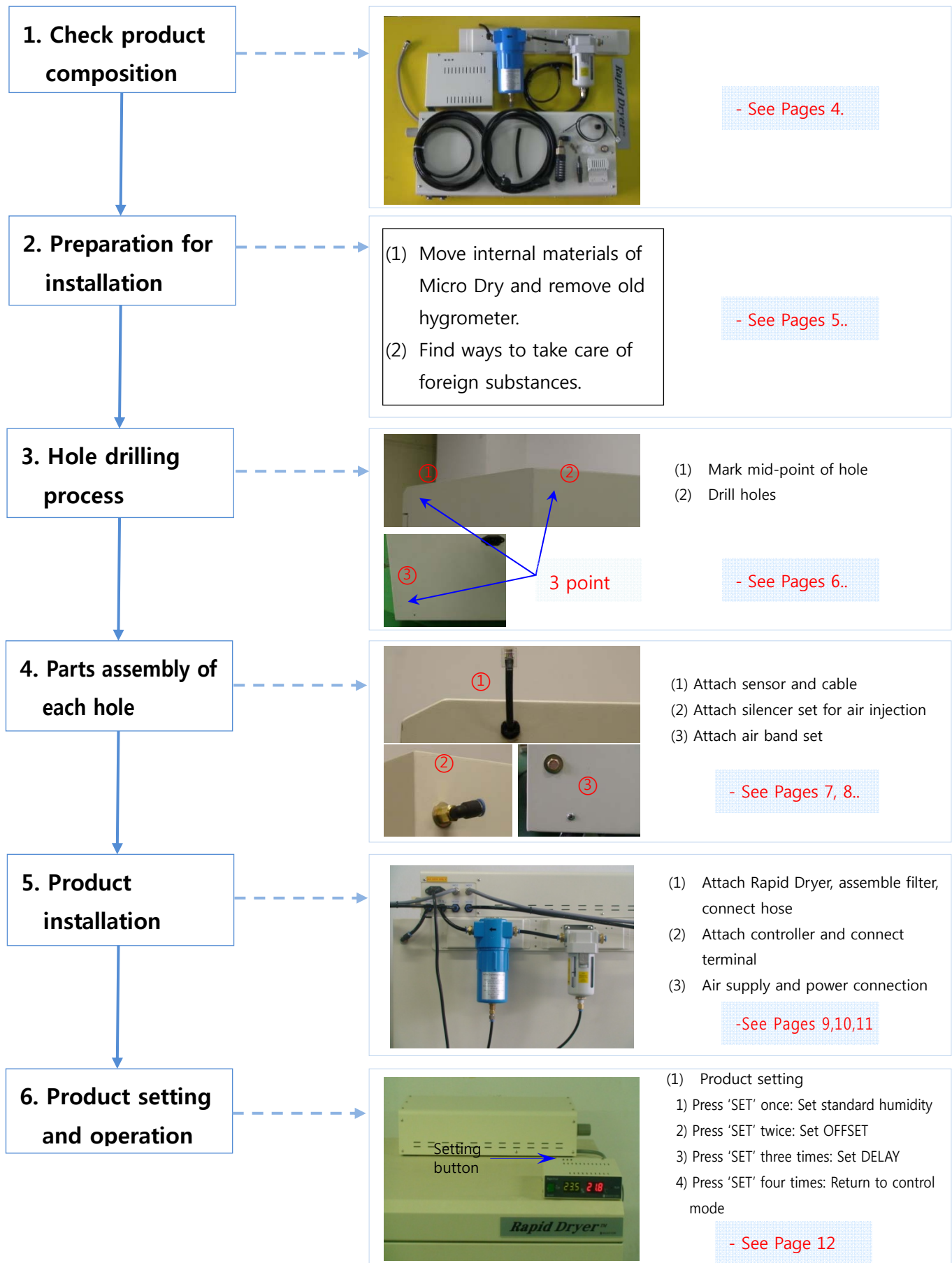
DANG JUNG DONG, KUNPO-SI,

KYUNGKI-DO KOREA.

Table of Contents

▷ Rapid Dryer installation flow chart	Page 3.
1. Product composition.	Page 4.
2. Preparation for installation	Page 5.
3. Micro Dry hole drilling process	Page 6.
4. Parts assembly of each hole	Page 7, 8.
5. Product installation	Page 9,10,11.
6. Product setting and operation	Page 12.
7. Product warranty	Page 13.

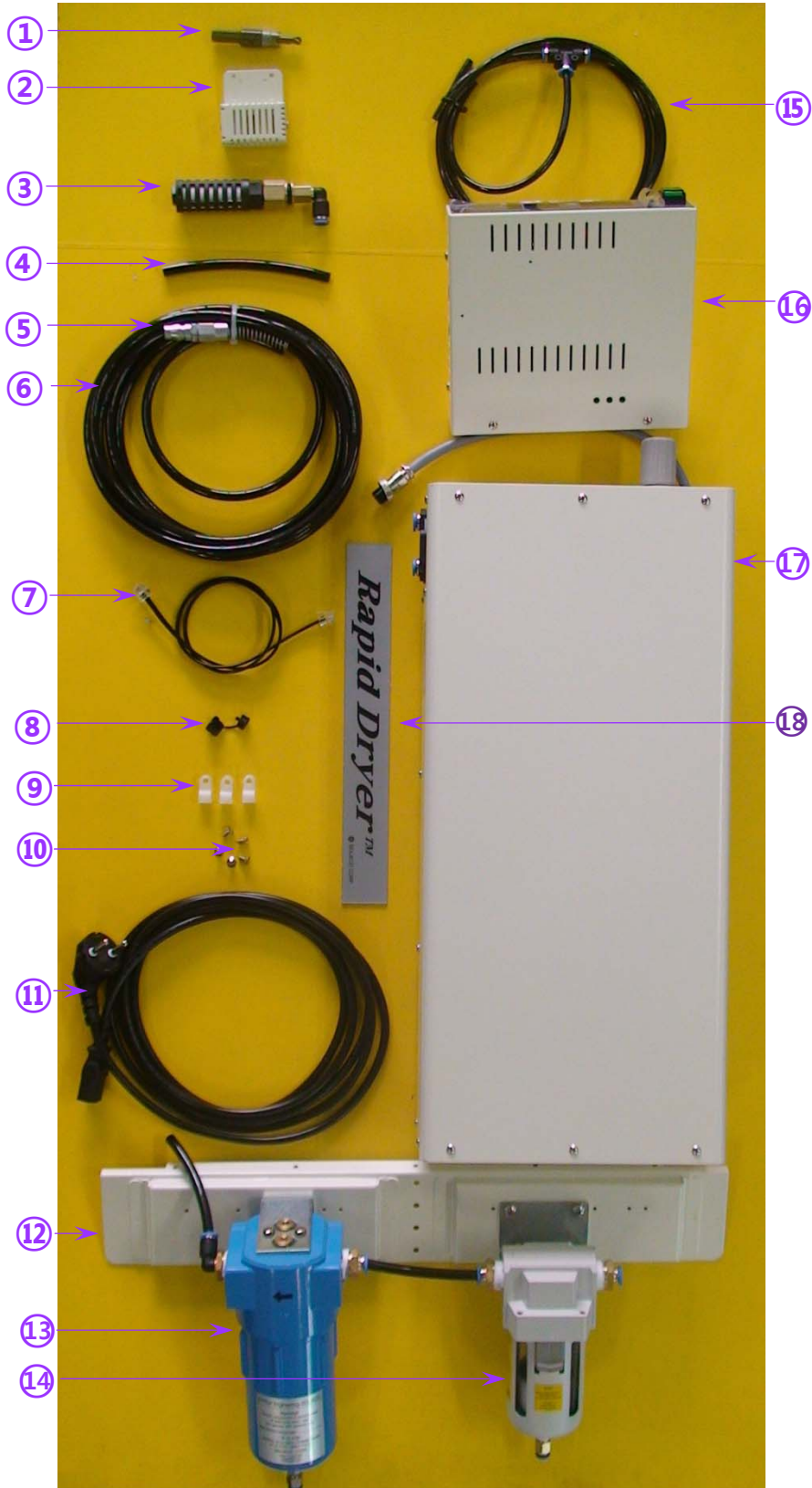
▷ Rapid Dryer installation flow chart



1. Product composition

No.	Item	Q'ty
1	Hole Cutter	1
2	Humidity Sensor	1
3	Silencer set for air into	1
4	Urethane hose Ø8, L=125	1
5	Hi coupler	1
6	Urethane hose Ø8, L=4000	1
7	Sensor Cable	1
8	Code stopper	1
9	Hose guide (Bolt mount)	3
10	Screw(M4X8)	5
11	Power cable	3
12	Filter Guide	1
13	Oil Filter	1
14	Air Filter	1
15	Urethane hose Ø6, L=1850	1
16	Rapid Dryer Controller	1
17	Rapid Dryer	1
18	Name Plate	1

The above may change for product improvement, and this may not be reflected on the details.



2. Preparation for installation

(1) Move contents of Micro Dry and remove the old hygrometer.

- 1) During hole drilling process, debris (iron powder) can attach to parts causing damage, so move the contents of Micro Dry to different areas.
- 2) Remove the old hygrometer and sensor installed in the upper section of the Micro Dry interior since it can interfere with hole drilling process.

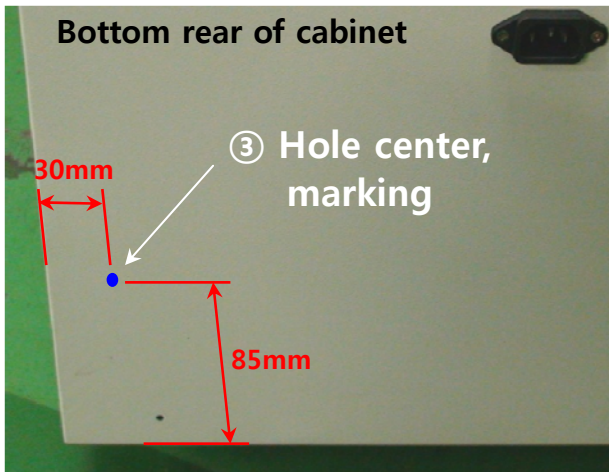
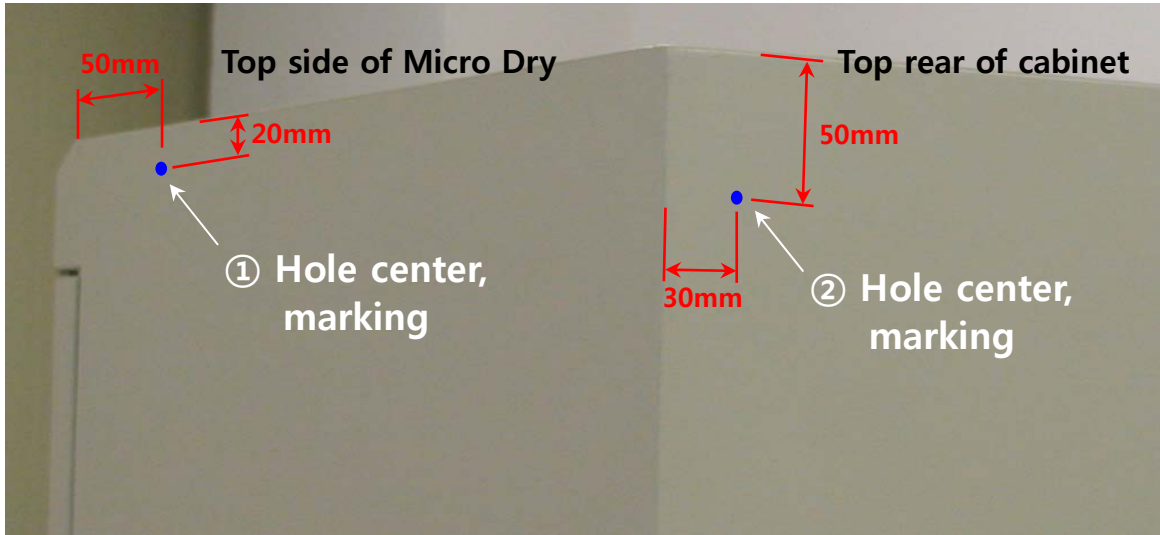
(2) Debris removal measures

- 1) Debris may form during the hole drilling process, so find ways to avoid debris from flying inside.
 - Example of method 1: Place the inlet port of vacuum cleaner where the hole will be drilled, and keep it on while drilling.
 - Example of method 2: Place tape around the area where hole will be drilled, so debris can adhere to the tape instead of being blown inside.

3. Micro Dry hole drilling process

(1) Mark the mid-point of the hole

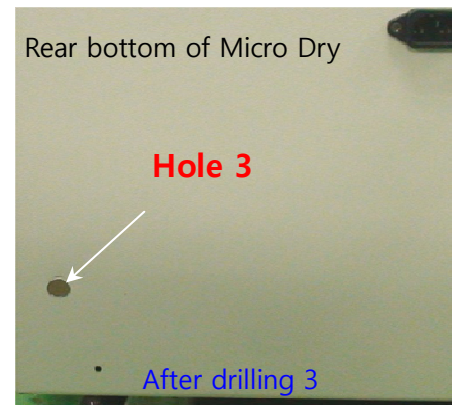
- 1) Mark 3 points for hole drilling as follows.
- 2) Use a center punch or nail to mark so the drill doesn't slip.



Refer to the video if this manual is insufficient.

(2) Drilling holes

- 1) Drill holes by using the Ø12 hole cutter (no.1).
- 2) Use file or knife to remove the sharp sections created from drilling.

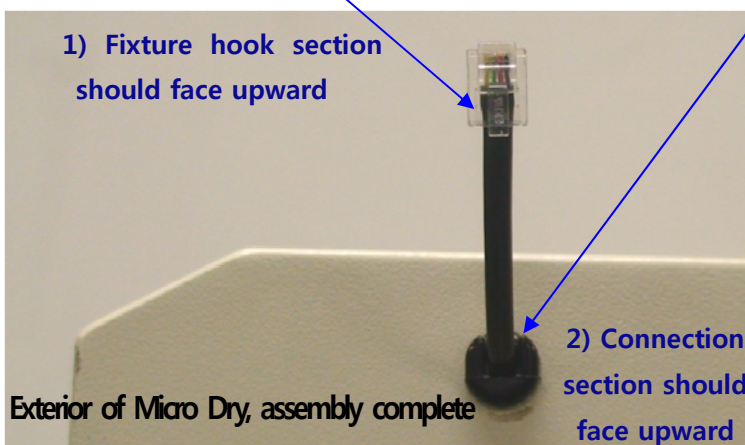
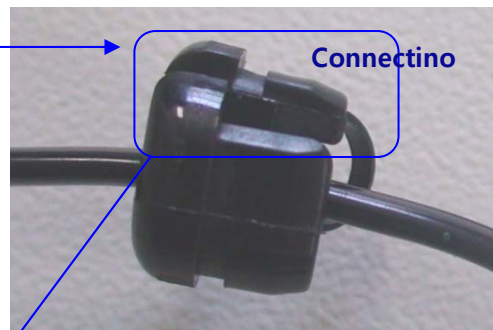
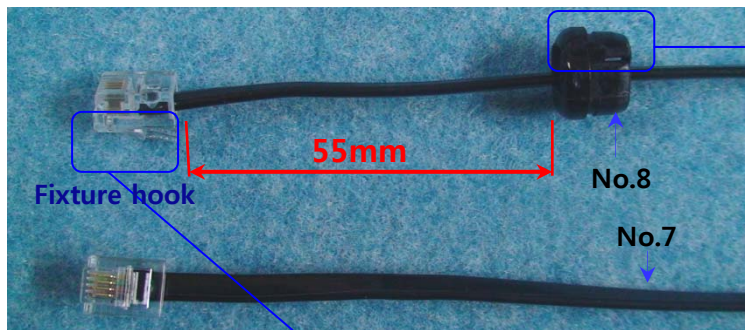


Refer to the video if this manual is insufficient.

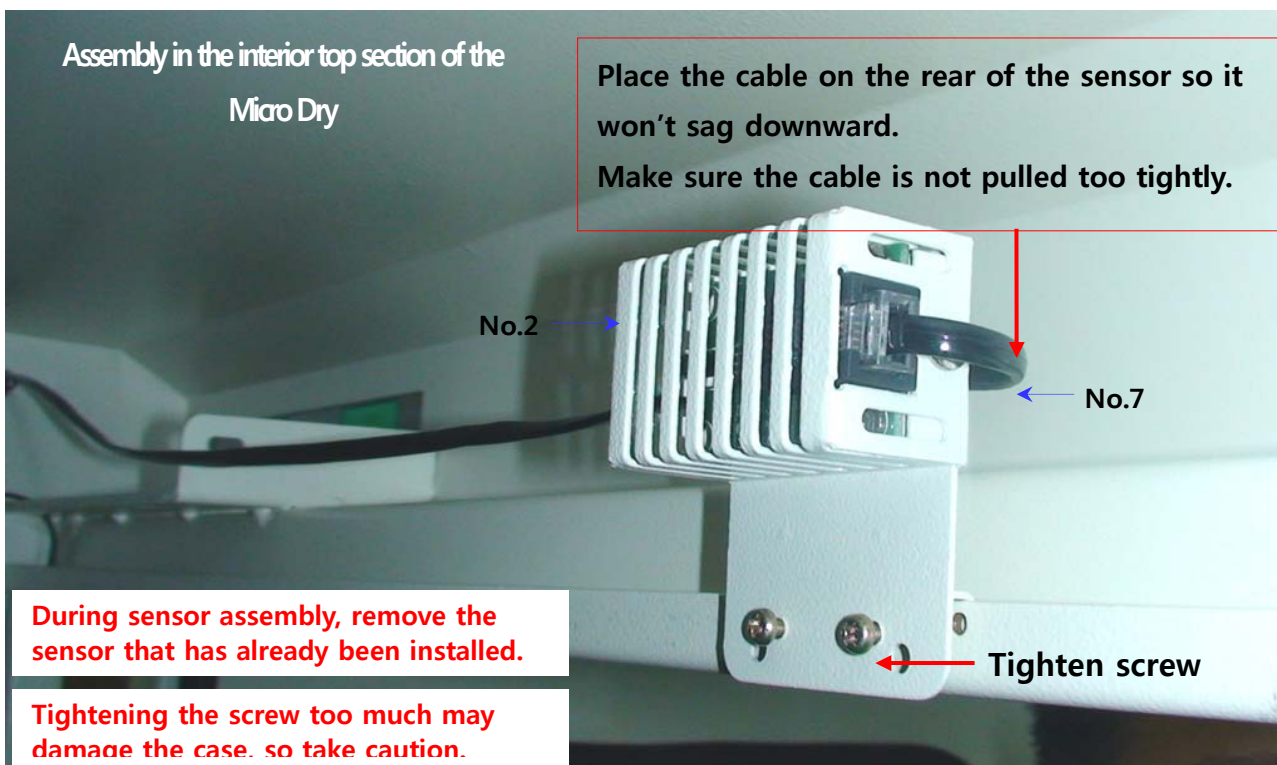
4. Parts assembly of each hole

(1) Attach sensor

- 1) As explained below, assemble the sensor cable (no. 7) and code stopper (no. 8) and slide into **Hole 1** (see page 6) from the exterior toward the interior.



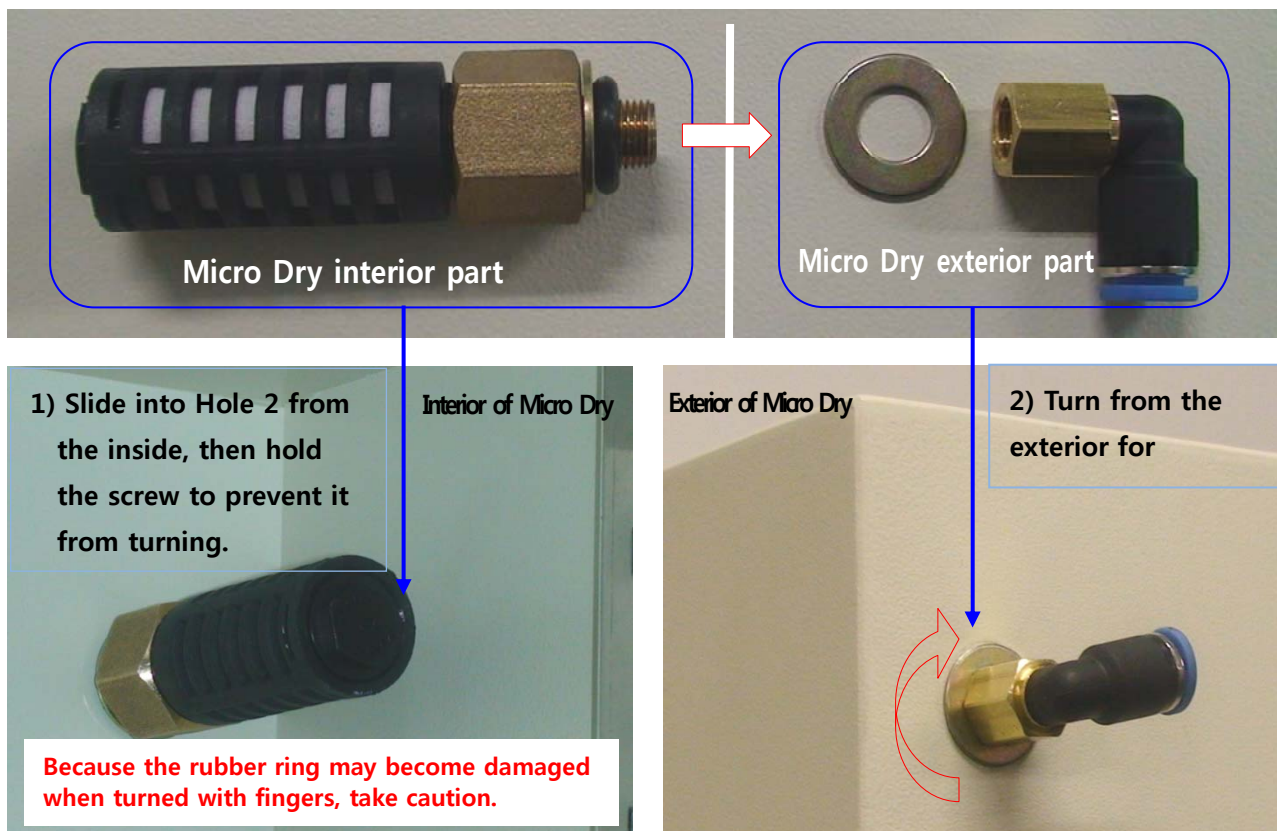
- 3) Assemble by placing the sensor (no. 4) on the top section of Micro Dry.



Refer to the video if this manual is insufficient.

(2) Assemble silencer set

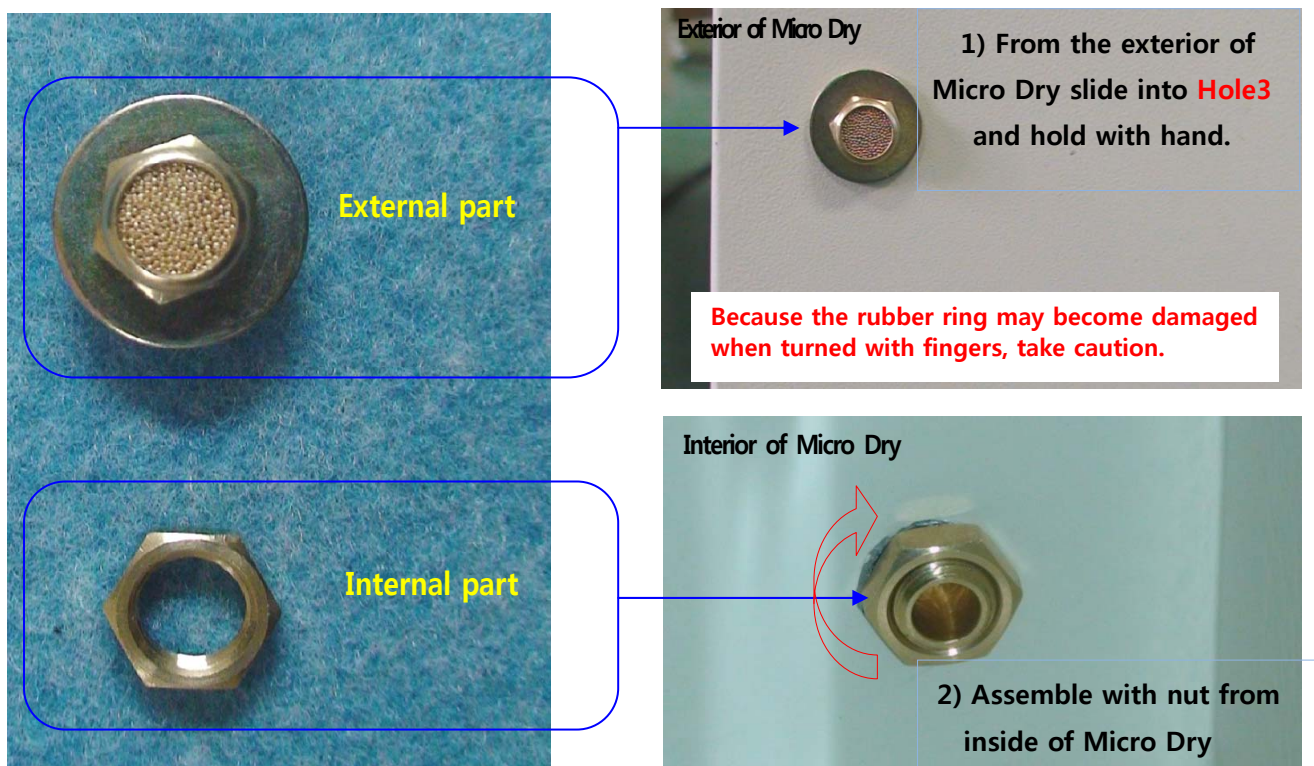
- 1) Assemble the silencer set for air injection (no.3) in **Hole 2** (see page 6) as follows. (2-person job)



Refer to the video if this manual is insufficient.

(3) Assembly of air vent set

- 1) Assemble the air vent set (no. 9) to **Hole 3** (see page 6) as follows.

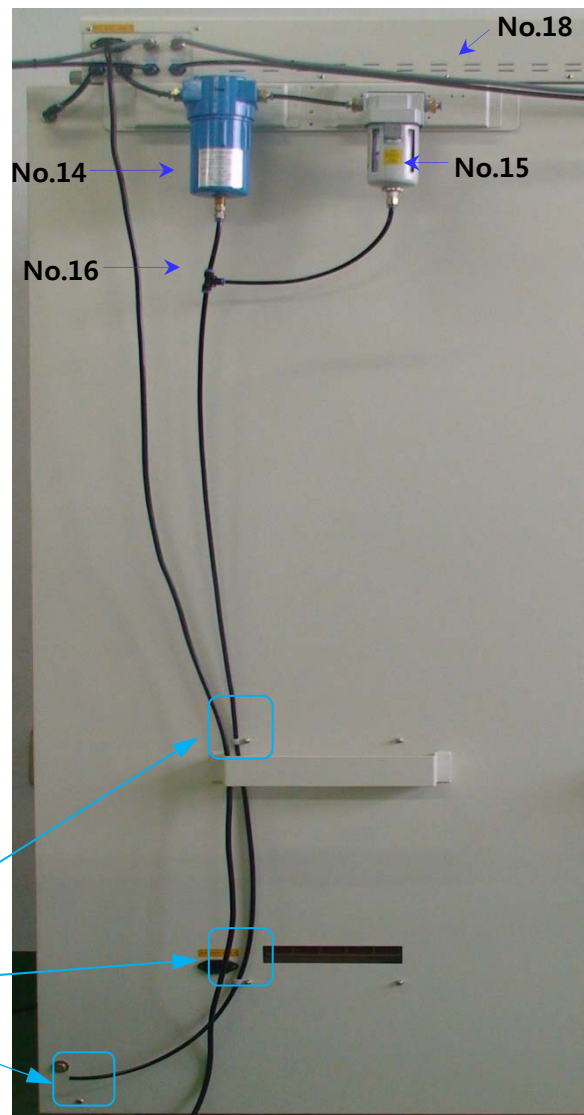
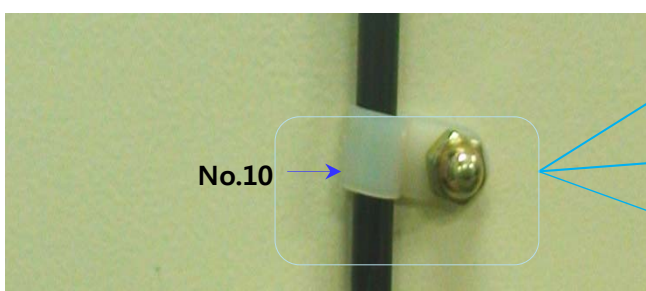
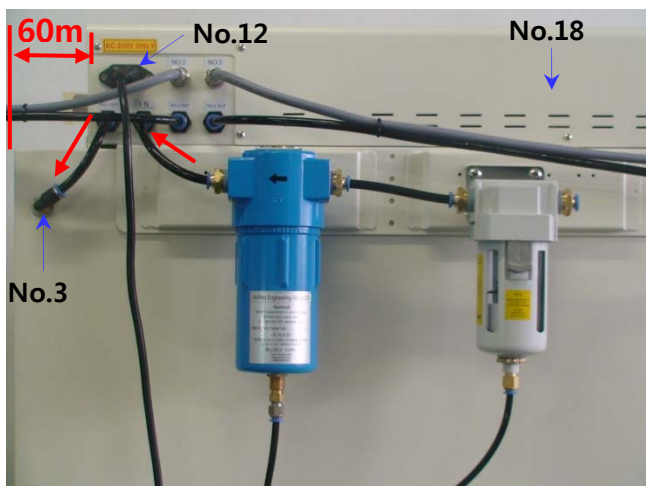
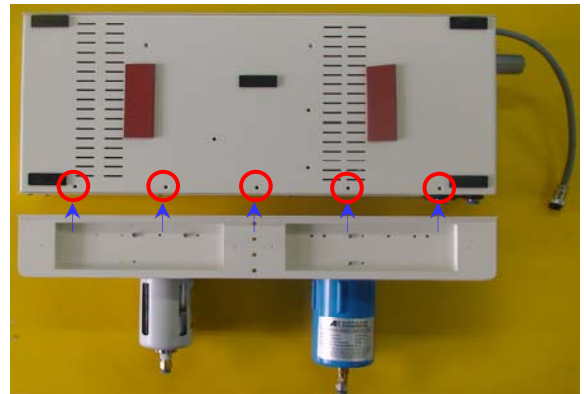


Refer to the video if this manual is insufficient.

5. Product installation

(1) Installation of Rapid Dryer

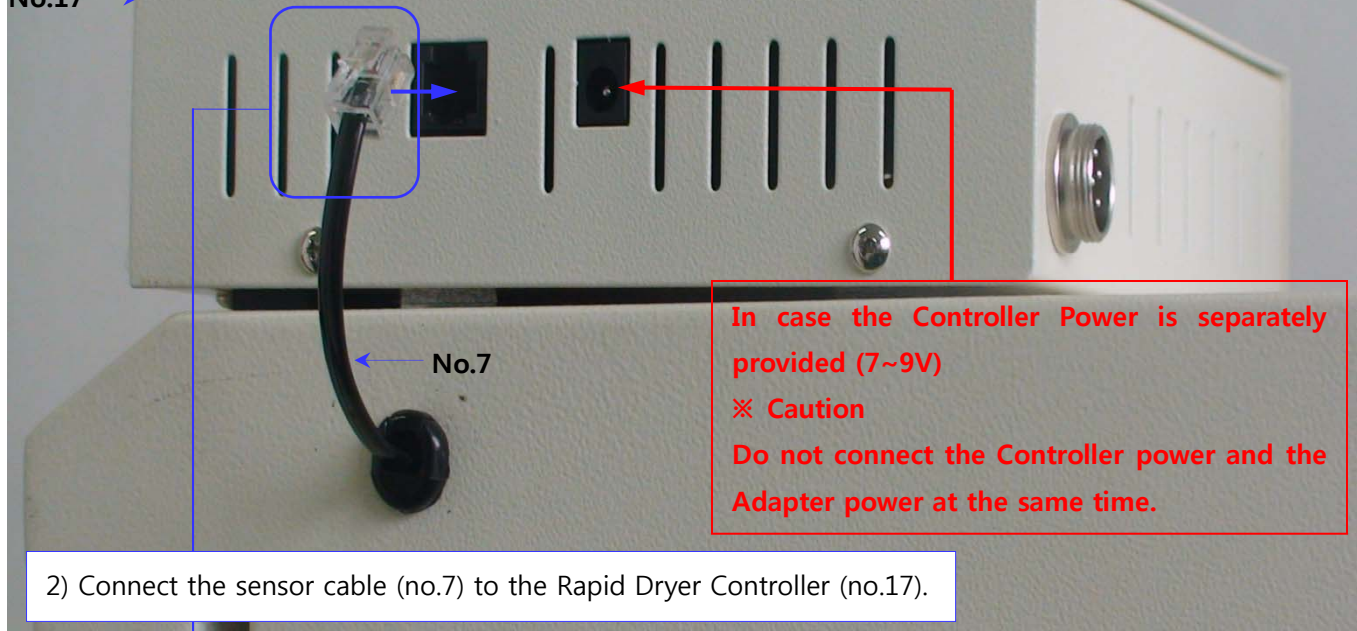
- 1) As shown in the right picture, match the hole of Filter Guide (No.13) to the lower hole of Rapid Dryer (No.18) and then fasten the SCREW (M4X8 No.11) tight.
- 2) As shown in the right picture and in the picture below, mount Rapid Dryer (No.18) in the rear top of Micro Dry. At this time, the filter-fixing plate should tightly adhere to the back of Micro Dry.
- 3) As shown in the right picture, connect the hose linked to the Filter (No. 14) in the direction of air flow.
- 4) Insert the hose linked to No.14 into the No.18 Air-In as shown in the picture below.
Insert the hose into the No.18 Air-Out and No.3.
- 5) Connect the power cable (No.12).
- 6) As shown in the right picture, connect the hose (No. 16) to the drain part of the Filter and then fix it with the Bolt Mount (No. 10).



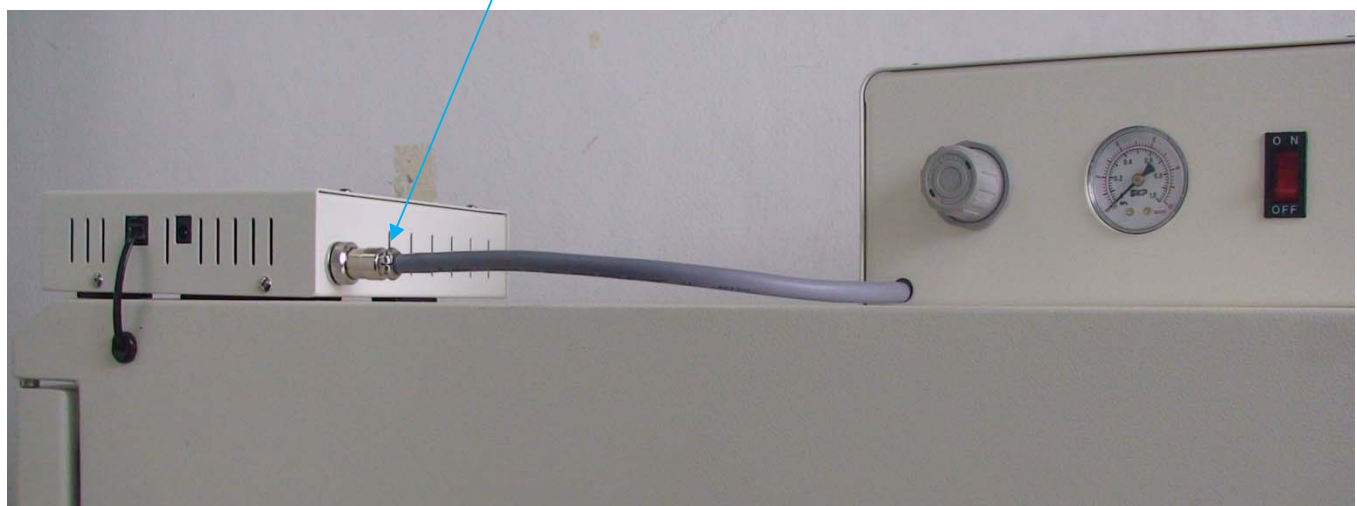
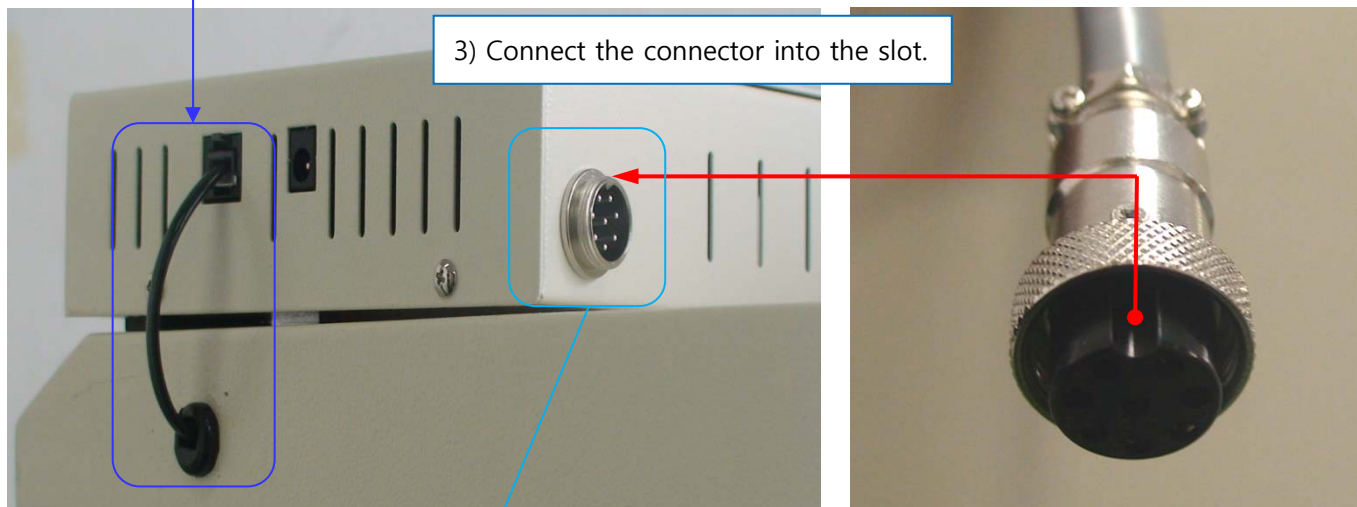
(2) Installation of Rapid Dryer Controller

1) Place the controller on top of the Micro Dry, toward the front.

No.17 →



2) Connect the sensor cable (no.7) to the Rapid Dryer Controller (no.17).



Refer to the video if this manual is insufficient.

(3) Air hose connection and air supply

- 1) Connect the hose (no. 14) to the filter section (no. 8) on the right to supply air.

- This product basically supplies 4M
- When air must be connected from a distance, make sure to extend the connection so there is no pressure loss.



※ Main Filter(SRD-400L5), the Dry Air Supplying Device inside the assembly, can be semi-permanently used, provided the replacement upon declination of performance is required as the massive moisture content and oil inflow may interfere with the dehumidification capability.

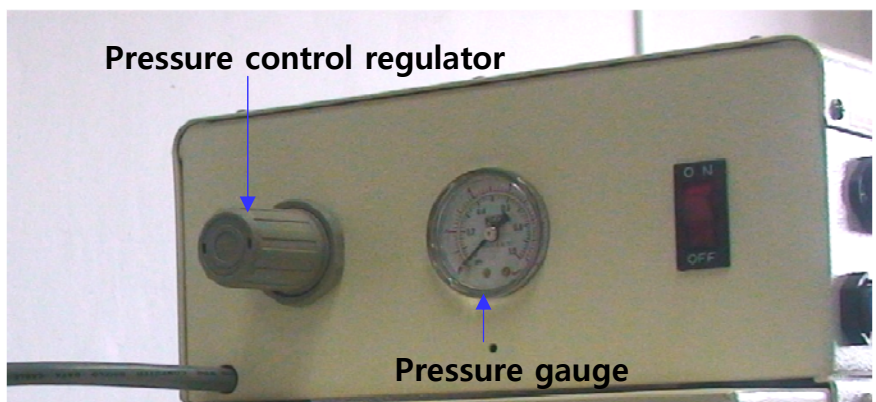
Oil Filter(No.14)
Filter replacement cycle:
1 year (recommended)

Air Filter(No.15)
Filter replacement cycle:
1 year (recommended)

This device is originally equipped with oil filters, but if a large amount of oil and moisture comes from the air compressor, it may cause serious damage to this device. Therefore, check the condition before supplying air.

- 2) Control the air pressure by turning the air regulator after injecting air.

- Recommended pressure: 6kgf/cm²
- Minimum pressure: 5kgf/cm²
- Necessary flux : 200ℓ/min
- Minimum flux: 150ℓ/min



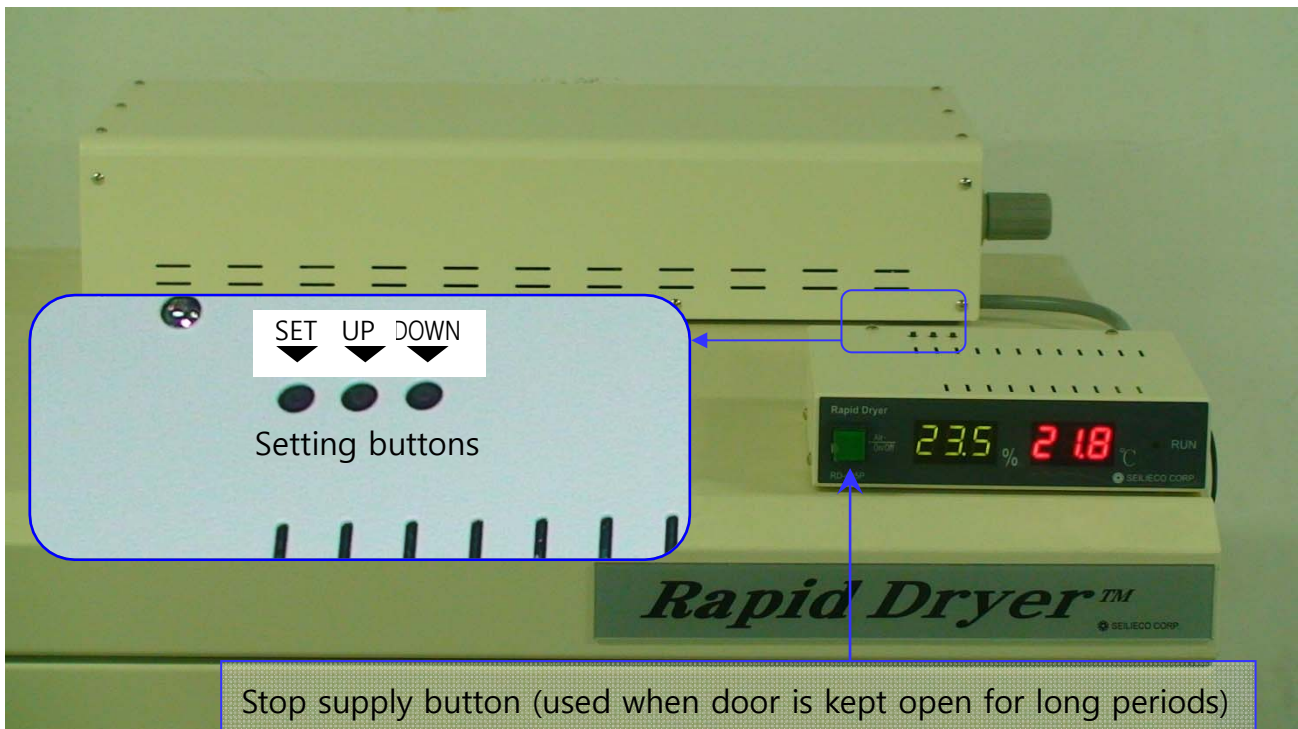
(4) Power connection and operation

- 1) After connecting to power, turn on the power switch of Rapid Dry. The humidity and temperature will show up on the display in a few seconds.
- 2) Turn on the controller switch. When the indicated humidity is over 10%, it will automatically operate and stop when humidity drops to 8%.



6. Rapid Dryer setting and operation

(1) Rapid Dryer Controller setting



1) Press 'SET' once: Set standard humidity (range: 5%rh~30%rh)

Use "UP" and "DOWN" buttons to change the standard humidity.

The temperature display will show "_H_"

2) Press 'SET' twice: Set OFFSET (range: 0~4)

When the apparatus is under operation, set standard humidity where operation should stop.

The temperature display will show "_O_"

Example. When the standard humidity is set at "10%" and OFFSET is set at "2":

Operation begins when the interior humidity of Micro Dry is increased beyond "10%rh" and stops when humidity drops to 8%. (Please note that interior humidity may increase when air supply stops.)

3) Press 'SET' three times: Set DELAY (range: 0~100 sec.)

Set the point of air supply when interior humidity increases, after a few moments.

The temperature display will show "_t_"

(Useful for short periods of material in/out, and stop button should be pressed when materials move period is extended.)

4) Press 'SET' four times: Return to control mode.

(2) Operation method

- 1) When the switch is turned on (see photo above), operation automatically begins according to the set values.
- 2) Turn off the above switch when the door of the Micro Dry is open for extended periods.

(3) Operation indication

- 1) The humidity/temperature values will be displayed when the internal humidity of the cabinet goes down below the set point.
- 2) When the values increase, the delay time is indicated on the temperature display, and the countdown begins.
- 3) When air is supplied, the supply status is indicated on the temperature display, and the value returns to the temperature when the set value is reached.